



Arlington  
Public  
Schools

## Pre-kindergarten Special Education Program Pilot Community Peer Pre-Kindergarten (CPP) Program

### Description of the CPP Program

- ⇒ Arlington Public Schools (APS) meets the needs of 2-, 3-, and 4-year-old children with disabilities through Pre-Kindergarten Special Education services. We have programs located in most APS elementary schools.
- ⇒ Pre-k children without identified disabilities ages 2 years 6 months (by September 30) through 4-years old from the Arlington community will have the opportunity to participate in one of the preschool Special Education Programs through the Community Peer Pre-Kindergarten Program (CPP). The CPP program is designed to support general education experiences for our younger students with disabilities.
- ⇒ Through this program, preschoolers from the community will participate in a high quality pre-k program at an APS elementary school. Our toddler programs provide play-based instruction to target all developmental areas with a focus on communication, interactions with peers and adults as well as fostering growing independent skills. Our 3-5 program provides instruction that is aligned with the Virginia Preschool Initiative (VPI) program and differentiated to meet student's needs. CPP provides pre-k students with and without disabilities opportunities to learn together and grow in all developmental areas.
- ⇒ Priority consideration and enrollment in the program is given to neighborhood-zoned children, children in families below the federal income poverty guideline (currently \$93,760 for a family of four in Arlington ) and current APS employees.

### Application Criteria

- ⇒ Must be a current Arlington resident.
- ⇒ For the 3-5-year-old programs, children must be age 3 or 4 by September 30<sup>th</sup> and toilet trained.
- ⇒ For the toddler programs, children must be 2.6 years old by September 30<sup>th</sup>.

### Application Process

- ⇒ **Application:** Complete application at the Welcome Center between **February 1, 2019- April 15, 2019**. Please call 703-228-8665 to schedule an appointment.
- ⇒ **Lottery Held:** If there are more applications received than seats available, a lottery will be held on **April 25, 2019**.
- ⇒ **Family Notification of Application Status:** Week of **May 1, 2019**.
- ⇒ **Acceptance of Seat:** Families need to accept or decline seat by **May 15, 2019**.
- ⇒ **Final Steps and Parent Responsibilities:**

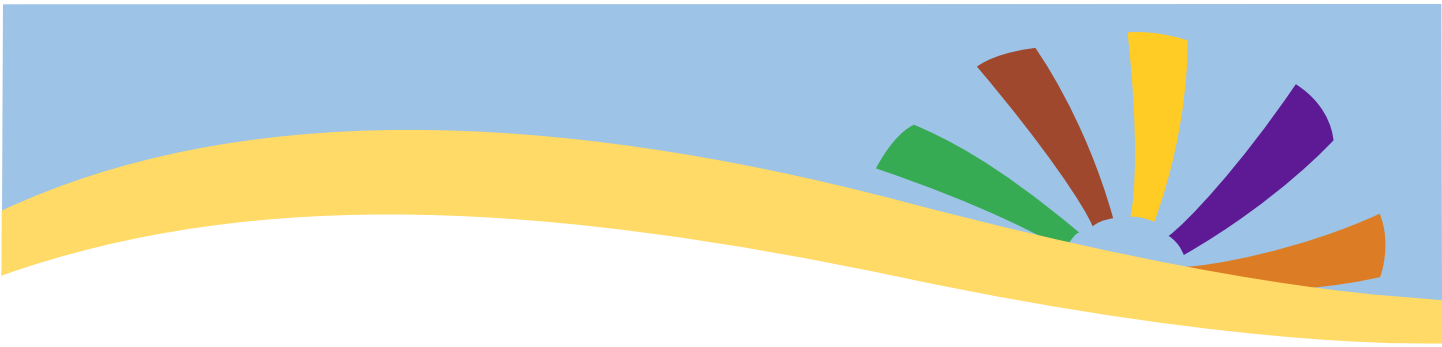
Upon registration, parents must provide income verification documents including the income verification form and pay any tuition fees (based on the current Montessori tuition fee scale; a sliding fee scale is available based on income).

Parents must register or have an appointment for registration for their child with APS by **June 25<sup>th</sup>**.

Parents must provide transportation or walk their child to school if their child is enrolled in the toddler program, is age three or lives outside of an existing school neighborhood zone.

Parents must sign a family commitment for the program that details attendance, school health guidelines as well as positive behavioral expectations.

**\*\*\*Please Note: This is a pilot year for the CPP Program. Prior to the registration for SY 20-21 for Pre-K Options, the process for enrollment including registration and fees (including tuition) will be reviewed and possibly revised.**



<b>Community Peer Pre-Kindergarten (CPP) Program</b>
<b>Barcroft</b>
<b>Carlin Springs</b> <b>(toddler program and 3-5 year old program )</b>
<b>Drew</b>
<b>Glebe</b>
<b>Hoffman-Boston</b>
<b>Taylor</b>
<b>Tuckahoe</b>
<b>Nottingham</b>

